

Pharmacy Residency Programs

OUR MISSION

TO IMPROVE
THE HEALTH OF
THOSE **WE SERVE**





Table of Contents

About OhioHealth	3
Dear Colleague	4
Residency at OhioHealth	5
ASHP Program Purpose Statement	8
Admission Requirements	10
Available PGY1 Pharmacy Residency Rotations	11
OhioHealth Hospitals	12
Doctors Hospital	13
Grant Medical Center	14
Mansfield Hospital	15
Marion General Hospital	16
Riverside Methodist Hospital	17
PGY1 Pharmacy Residency	18
PGY2 Ambulatory Care	19
PGY2 Critical Care	20
PGY2 Emergency Medicine	21
PGY2 Oncology	22
PGY2 Pain Management and Palliative Care	23
PGY1/PGY2/MS HSPAL	24
2024-2025 Residency Class	26
Residency Program Leadership	30



About OhioHealth

OhioHealth is a nationally recognized, not-for-profit, charitable, healthcare outreach of the United Methodist Church.

Based in Columbus, Ohio, OhioHealth has been recognized as one of the top five large health systems in America by Truven Health Analytics, an honor it has received six times. It has also been recognized by FORTUNE as one of the “100 Best Companies to Work For” 15 times since 2007.

Serving its communities since 1891, OhioHealth is a family of 35,000 associates, physicians and volunteers, and a network of 15 hospitals, three joint-venture hospitals, one managed-affiliate hospital, 200+ ambulatory sites and other health services spanning a 50-county area.

Message from the Vice President of Pharmacy Services,



You've reached another critical milestone in your professional development journey. Choosing where to apply for your residency will be one of the most important decisions of your career. It will accelerate your learning and shape the way you practice for many years to come.

At OhioHealth, we want you to have the information you need to make a confident decision. Though this document provides a general overview of our pharmacy residency program, we will always make ourselves available to answer your questions with greater detail. It's our goal for you to complete your evaluation process with a clear understanding of what it's like to be a pharmacy resident at OhioHealth.

Our programs are American Society of Health-System Pharmacists-accredited, and we continually refine them to provide you with a relevant environment to hone your clinical skills and discover leadership capabilities. We are proud of our pharmacy residency programs' long-standing history and national reputation, the experience and tenure of our leadership and preceptor teams, the thriving careers of residents we have mentored, and our ability to offer employment opportunities within the OhioHealth system to many of our residents. But our proudest achievement is helping you reach your goals, because we believe when you succeed, we all succeed.

As you research the many residency programs available to you, I encourage you to be curious and thoughtful in exploring our OhioHealth pharmacy residency programs. If you believe OhioHealth is the right home for you to take the next step in your professional development, we welcome your application. And if you would like to speak to someone who can offer you greater insight about our program, please contact us at PharmacyResidency@OhioHealth.com.

Good luck in your pursuit and welcome to residency!

Sincerely,

Charles McCluskey III, PharmD, MBA, BCPS
System Vice President of Pharmacy Services



Residency at OhioHealth

You will be guided by clinical experts with years of experience in hands-on instruction. Our health system has been recognized by FORTUNE as one of the “100 Best Companies to Work For” 15 times since 2007; providing an exceptional learning and working environment.

This table shows our five residency locations and the pharmacy residency positions offered at each location.

Residency locations	Residency positions offered
OhioHealth Doctors Hospital	+ 2 PGY1 Pharmacy residents
OhioHealth Grant Medical Center	+ 2 PGY1 Pharmacy residents
	+ 1 PGY1 and 1 PGY2 HSPAL resident
	+ 1 PGY2 Emergency Medicine resident
OhioHealth Mansfield Hospital	+ 3 PGY1 Pharmacy residents
OhioHealth Marion General Hospital	+ 2 PGY1 Pharmacy residents
OhioHealth Riverside Methodist Hospital	+ 4 PGY1 Pharmacy residents
	+ 1 PGY1 and 1 PGY2 HSPAL residents
	+ 1 PGY2 Ambulatory Care resident
	+ 1 PGY2 Critical Care resident
	+ 1 PGY2 Oncology resident
	+ 1 PGY2 Pain and Palliative Care resident

LEGEND: PGY 1 = Postgraduate year 1, PGY 2 = Postgraduate year 2, HSPAL = Health-system pharmacy administration and leadership

Benefits

Appointment Period

- + July 1 through June 30
- + Resident orientation usually begins mid-June

PGY1 AND PGY2 PROGRAMS

Compensation

- + \$53,000 PGY1 (postgraduate year 1) resident annual salary.
- + \$54,000 PGY2 (postgraduate year 2) resident annual salary.
- + Additional shifts paid at regular pharmacist salary.

Health Insurance Options

- + Medical insurance plans are available through OhioHealth.

Time Away Pay (TAP) And Holiday Coverage

- + Generous time away package equivalent to a full-time associate.
- + Work one winter holiday* (Thanksgiving, Christmas or New Year's Day).
- + Work one summer holiday* (Memorial Day, Independence Day or Labor Day).

Travel and Professional Leave

- + Partial reimbursement for reasonable travel expenses to attend a national pharmacy conference and a regional pharmacy residency conference including meeting registration, travel, hotel and meals.
- + Attendance at professional meetings is considered part of professional responsibilities — taking paid time off not required.
- + Alternate conference options may be available on a case by case basis.

Membership and Certification

- + Advanced cardiovascular life support (ACLS) certification.
- + Basic life support (BLS) certification.

Resident Responsibilities

- + PGY1: Staffing every other weekend.*
- + PGY2: Staffing every fourth weekend.*
- + Rotate through administrative on-call system.*
- + PGY1's work four night shifts.*
- + PGY2's work three night shifts.*
- + Poster presentation at a national professional meeting or applicable conference.
- + Podium presentation at regional pharmacy residency conference.
- + Completion of a research project.

PGY1/PGY2 Health System Pharmacy Administration and Leadership (HSPAL) Program

Compensation

- + Additional waiver of The Ohio State University tuition.

Resident Responsibilities

- + Work seven total night shifts over two years.
- + Staffing every fourth weekend in the second year.

Academic Responsibilities

- + Didactic coursework evenly spread out across PGY1/PGY2 years.
- + Completion of a Master's thesis research project.

ASHP Program Purpose Statements

All of our residency programs are firmly rooted in American Society of Health-System Pharmacy (ASHP) accreditation standards, with the goal of maintaining a continual state of accreditation readiness.

PGY1 Program Purpose

PGY1 residency programs build upon Doctor of Pharmacy (PharmD) education and outcomes to develop pharmacist practitioners with knowledge, skills, and abilities as defined in the educational competency areas, goals, and objectives. Residents who successfully complete PGY1 residency programs will be skilled in diverse patient care, practice management, leadership, and education, and be prepared to provide patient care, seek board certification in pharmacotherapy (i.e., BCPS), and pursue advanced education and training opportunities including postgraduate year two (PGY2) residencies.

PGY2 Program Purpose

PGY2 residency programs build upon Doctor of Pharmacy (PharmD) education and PGY1 pharmacy residency training to develop pharmacist practitioners with knowledge, skills, and abilities as defined in the educational competency areas, goals, and objectives for advanced practice areas. Residents who successfully complete PGY2 residency programs are prepared for advanced patient care or other specialized positions, and board certification in the advanced practice area, if available.

PGY2 HSPAL Program Purpose

A PGY2 health-system pharmacy administration and leadership residency builds upon PGY1 residency graduates' competence in the delivery of patient-centered care and in pharmacy operational services to prepare residents who can assume high level managerial, supervisory, and leadership responsibilities. Areas of competence emphasized during the program include safe and effective medication-use systems, quality assurance and improvement, the management of human resources, the management of financial resources, use of technology, and advanced leadership. The residency lays the foundation for continued growth in management and leadership skills. Upon graduation, residents are prepared for a clinical or operational management/supervisory role in a variety of work settings.

Development Opportunities and Resident Responsibilities

- + Assume preceptor roles for Introductory Pharmacy Practice Experience (IPPE) and/or Advanced Pharmacy Practice Experience (APPE) students while on rotations.
- + Give back to the community through meaningful service projects (20 hours per year).
- + Get involved in health-system committees, councils and teams.
- + Participate in optional teaching certificate available through various colleges of pharmacy.
- + Practice weekend coverage in a variety of settings, including centralized and decentralized staffing, warfarin and pharmacokinetic dosing, and clinical rounding (PGY1 every other weekend, PGY2 every fourth weekend).*
- + Quarterly resident research and professional development workshops.



Admission Requirements*

OhioHealth pharmacy residency programs are available to individuals who meet the Ohio Licensure requirements. Consideration for admission requires:

- + Eligibility for Ohio licensure
- + Letter of intent
- + Curriculum vitae
- + Three standard reference forms in PhORCAS
- + Official college transcripts

Please submit all application materials via Pharmacy Online Residency Centralized Application Service (PhORCAS). Deadline for receipt of these materials to be considered for an on-site interview is January 2, by 11:59 PM. For PGY2 residency programs, a PGY1 Residency or equivalent experience is required.

**OhioHealth will consider applicants who are U.S. citizens, lawful permanent residents, asylees and refugees, and other individuals with work authorizations that do not require visa sponsorship by the hospital.*

Available PGY1 Pharmacy Residency Rotations

	Doctors Hospital	Grant Medical Center	Mansfield Hospital	Marion General Hospital	Riverside Methodist Hospital
Acute Care Rotations					
General medicine	■	■	■	■	■
Medical ICU	■	■	■	■	■
Surgical ICU		■			■
Neuro ICU					■
Trauma intermediate care		■	■		
Cardiology		■	■		■
Emergency medicine	■	■	■	■	■
Perioperative/orthopedic surgery		■			
Infectious disease	■	■	■	■	■
Nutrition management		■			■
Palliative care		■		■	■
Oncology		■	■		■
Behavioral health				■	■
Neurology					■
Nephrology					■
Ambulatory Care Rotations					
Anticoagulation clinic	■	■	■	■	■
Antiarrhythmic management					■
Family practice	■	■			■
Infectious disease clinic		■			■
Heart failure clinic					■
Oncology clinic	■		■	■	■
Oncology infusion	■	■	■	■	■
Transitions of care clinic					■
Non-Patient Care Rotations					
Clinical management	■	■	■	■	■
Human resources		■			■
Leadership	■	■	■	■	■
Medication safety	■	■	■	■	■
Operations management	■	■	■	■	■
OhioHealth Corporate Rotations					

Ambulatory Management (clinical, retail/specialty, home infusion), Compliance and Learning, Informatics, Population Health, Procurement, Shortage Coordination, and System Medication Safety.

Regardless of the residency site, all rotations are available as electives to all OhioHealth residents. Scheduling of rotations will be based on the availability at each hosting care site. (ASHP standard requires 75% of all rotations be completed at the home site).

OhioHealth Hospitals



1 Riverside Methodist Hospital

2 Grant Medical Center

3 Hardin Memorial Hospital

4 Marion General Hospital

5 Doctors Hospital

6 Grady Memorial Hospital

7 Dublin Methodist Hospital

8 O'Bleness Hospital

9 Mansfield Hospital

10 Shelby Hospital

11 Grove City Methodist Hospital

12 Berger Hospital

13 Southeastern Medical Center

14 Van Wert Hospital

15 Pickerington Methodist Hospital

Residency programs offered at this location



OhioHealth Doctors Hospital

PGY1 Pharmacy Residency

OhioHealth Doctors Hospital is a 213-bed, tertiary care teaching hospital located in Columbus, Ohio.

It operates one of the largest osteopathic medical training programs in the United States, allowing for opportunities to interact within a multidisciplinary, layered learning environment. The pharmacy residency program at Doctors Hospital was established in 2016 and creates an opportunity for resident involvement in the further development of the program, consistent with system goals and objectives.

OUR PATIENT POPULATION

- + Anticoagulation
- + Cardiology
- + Emergency medicine
- + General medicine
- + General surgery
- + Infectious disease
- + Medical intensive care
- + Medication safety
- + Nutrition support
- + Oncology and infusion clinic
- + Orthopedics
- + Palliative care
- + Women's health



OhioHealth Grant Medical Center

PGY1 Pharmacy Residency, PGY2 Emergency Medicine,
PGY1/PGY2 Health-System Pharmacy Administration and Leadership

Located in downtown Columbus, OhioHealth Grant Medical Center is a 640-bed teaching hospital and the busiest Level I Trauma Center in the state.

Pharmacy services is integrated with multidisciplinary teams and prides itself on the high caliber of residency graduates. The Grant Medical Center program has operated for more than 60 years and is recognized by American Society of Health-System Pharmacy (ASHP) as one of 12 programs offering continuous training since 1963. OhioHealth Grant Medical Center operates as a 340B Disproportionate Share Hospital (DSH) covered entity.

OUR PATIENT POPULATION

- + Anticoagulation
- + Cardiology
- + Emergency medicine
- + Family medicine
- + General medicine
- + Hematology and oncology
- + Infectious disease
- + Medical intensive care
- + Medication safety
- + Orthopedics
- + Palliative care
- + Surgery and perioperative care
- + Surgical intensive care
- + Transitions of care
- + Trauma
- + Women's health



OhioHealth Mansfield Hospital

PGY1 Pharmacy Residency

OhioHealth Mansfield Hospital is a 326-bed community hospital and is the only full-service hospital serving Richland County and the surrounding region.

For more than a century, Mansfield Hospital has provided award-winning care as the largest medical provider between Cleveland and Columbus. The pharmacy residency program at Mansfield Hospital is newly established in 2018 and creates an opportunity for resident involvement in the further development of the program, consistent with system goals and objectives.

OUR PATIENT POPULATION

- + Anticoagulation
- + Behavioral health
- + Cardiology
- + General medicine
- + Heart failure clinic
- + Infectious disease
- + Medical intensive care
- + Medication safety
- + Neurology
- + Oncology and infusion clinic
- + Palliative care
- + Surgical intensive care
- + Trauma
- + Women's health



OhioHealth Marion General Hospital

PGY1 Pharmacy Residency

OhioHealth Marion General is a 250-bed community hospital just north of Columbus.

Established in 1920, Marion General Hospital is the only full-service hospital serving Marion and the surrounding communities. The pharmacy residency program at Marion General Hospital was established in 2016 and creates an opportunity for resident involvement in the further development of the program, consistent with system goals and objectives.

OUR PATIENT POPULATION

- + Anticoagulation
- + Behavioral health
- + Emergency medicine
- + General medicine
- + General surgery
- + Heart failure clinic
- + Infectious disease
- + Oncology and infusion clinic
- + Medical intensive care
- + Medication safety
- + Neurology
- + Outpatient pharmacy
- + Orthopedics
- + Palliative care
- + Transitions of care
- + Women's health



OhioHealth Riverside Methodist Hospital

PGY1 Pharmacy Residency, PGY2 Ambulatory Care, PGY2 Critical Care, PGY2 Oncology, PGY2 Pain Management and Palliative Care, PGY1/PGY2 Health-System Pharmacy Administration and Leadership

Serving patients since 1892, OhioHealth Riverside Methodist Hospital in Columbus, is a 1,059-bed teaching hospital and OhioHealth’s largest hospital.

Consistently ranked a high-performing hospital for adult neurology and neurosurgery by U.S. News & World Report. The pharmacy department has been recognized for excellence in pharmacy practices and now has more than 50 years of success in pharmacy residency training.

OUR PATIENT POPULATION

- + Antiarrhythmic management
- + Anticoagulation
- + Behavioral health
- + Blood and marrow transplant
- + Cardiovascular intensive care
- + Emergency medicine
- + General medicine
- + General surgery
- + Heart disease management
- + Hematology and oncology
- + Infectious disease
- + Medical intensive care
- + Medication safety
- + Neurointensive care
- + Neurology
- + Nephrology
- + Nutrition support
- + Palliative care
- + Surgery and operating room
- + Surgical intensive care
- + Transitions of care
- + Women’s health

PGY1 Pharmacy Residency

Our residency program offers the flexibility for our residents to explore their areas of interest by creating a customized rotation experience, which may include off-site rotations.

Month	Rotation	Longitudinal			Conferences
June	Orientation (6 weeks)	Hospital Pharmacy Practice (including staffing)	Professionalism and Leadership	Research (dedicated month included)	
July					
August	General Medicine (6 weeks)				
September	Critical Care (4 weeks)				
October	Elective (4 weeks)				OSHP Division Day
November	Elective (4 weeks)				
December	Research				ASHP Midyear
January	Ambulatory Care (4 weeks)				
February	Administration Management (4 weeks)				
March	Elective (4 weeks)				
April	Medication Use and Performance Improvement (4 weeks)				
May	Medication Safety (4 weeks)				Research Conference/ OSHP
June	Elective (4 weeks)				

* Example rotation schedule (actual schedule may vary)

- Required Clinical Rotations
- Required Longitudinal Rotations
- Required Administrative Rotations
- Elective Rotations

PGY2 Ambulatory Care Pharmacy Residency

The PGY2 Ambulatory Care residency program at OhioHealth Riverside Methodist Hospital is tailored to fulfill residents' individual interests and goals within ASHP accreditation standards. The focus of this residency is to train individuals to develop strong clinical and program management skills through providing care to ambulatory patients in a variety of primary care and specialty clinic settings across our health care system. The resident will participate in both longitudinal and block experiences that will allow them to see multiple practice structures and collaborative practice agreements as well as establish individual relationships with patients and other health care professionals. The resident will gain additional in-depth experience with research and leadership from a system level. There are several elective options and project opportunities to allow residents to pursue individual interests.

Month	Rotation	Longitudinal		Conferences	
July	Orientation	OPG Diabetes Management (8 hours per week)	Anticoagulation (8 hours per week)	Ambulatory Leadership	Research
August	Heart Failure Clinic				
September					
October					
November	Family Practice				
December	Research				ASHP Midyear
January	Antiarrhythmic Clinic	Viral Hepatology Clinic (4 hours per week)	Ambulatory Leadership	Research	
February	Grant Family Practice-Specialty Clinics				
March					
April	Population Health				
May	Elective				APHA
June	Capstone				Research Conference
					OHRD

* Example rotation schedule (actual schedule may vary)

- Required Clinical Rotations
- Longitudinal and Standard Rotations
- Elective Rotations

PGY2 Critical Care Pharmacy Residency

The Critical Care Pharmacy Residency Program at OhioHealth Riverside Methodist Hospital offers robust training experiences in medical, cardiac, surgical, neurocritical care and emergency medicine. This residency program is designed to foster clinical expertise, leadership, and project/research management through various activities scheduled during the residency year. Residents will collaborate with pharmacy preceptors, physicians, advanced practitioners and other interdisciplinary critical care team members to improve care of critically ill patients through direct and indirect patient care initiatives. The residency program can be tailored based on resident interest with electives that include precepting, toxicology, pediatric critical care, pediatric emergency medicine and nutrition support.

Month	Rotation	Longitudinal			Conferences
July	Orientation	Hospital Pharmacy Practice (Every Fourth Weekend)	Nutrition (Optional)	Leadership	Research
August	Intensive Care Unit				
September					
October					
November	Surgical ICU 1				
December	Research				
January	Cardiac Critical Care 1				
February	Emergency Medicine				
March	Elective				
April	Elective				
May	Elective				
June	Critical Care Overview				
					OSHP
					ASHP Midyear
					SCCM
					Research Conference

* Example rotation schedule (actual schedule may vary)

- Required Clinical Rotations
- Required Longitudinal Rotations
- Required Off-Site Rotations
- Elective Rotations

PGY2 Emergency Medicine Pharmacy Residency

The Emergency Medicine Pharmacy Residency Program at OhioHealth Grant Medical Center offers vast training experiences that can be tailored to the interest of each resident. Averaging greater than 80,000 annual visits, with more than a quarter of those patients being admitted, the Grant Medical Center Emergency Department contains 65 beds, including a 3-bed trauma and resuscitation bay, in addition to a closed behavioral health unit. Grant Medical Center is a Level 1 Trauma Center that averages 6,000 trauma patients annually. Pharmacists, in addition to medication history technicians, offer dedicated 24/7 coverage in the Emergency Department. Residents will participate directly in patient care emergencies, including cardiac arrest; trauma response; stroke, STEMI, and sepsis alerts; airway emergencies; and perioperative emergencies. Additional experiences, some of which are off-site, include disaster preparedness, free-standing emergency medicine, pediatric emergency medicine, trauma, and toxicology.

Month	Rotation	Longitudinal				Conferences
July	Orientation	Practice Management*	Project Management	Professionalism and Leadership	Research	
August	Emergency Medicine 1*					
September						
October						
November	Emergency Medicine 2					
December	Central Ohio Poison Center Toxicology					
January	Critical Care Elective					
February	Critical Care Elective					
March	Nationwide Children's Hospital Pediatric Emergency Medicine					
April	Advanced Emergency Medicine and Precepting					
May						
						Specialty Conference
June		OHRI Research Conference				
	Disaster Preparedness					

* Example rotation sequence. Actual sequence dependent of rotation/preceptor availability.

- Required Clinical Rotations
- Required Longitudinal Rotations
- Required Off-Site Rotations
- Elective Rotations

PGY2 Oncology Pharmacy Residency

PGY2 Oncology residency training at OhioHealth Riverside Methodist Hospital is tailored to fulfill residents' individual interests and goals within ASHP accreditation standards. The focus of this residency is to train individuals to lead oncology practice change and practice as clinical experts in the field of oncology pharmacy. The program allows residents to gain experiences with a diverse cancer population in a variety of practice settings. Residents actively participate in staff development programs and system-level decision-making. Longitudinal ambulatory care training enables residents to establish individual relationships with patients and other healthcare professionals. There are several elective options and project opportunities, allowing residents to pursue individual interests.

Month	Rotation	Longitudinal					Conferences ¹	
July	Orientation	Hospital Pharmacy Practice (Every 2-4 Weekends)	Oncology Formulary Management	Oncology Pharmacy Leadership	Oncology Precision Medicine	Research	Investigational Drug Services	
August	Oncology Infusion Center							
September	Inpatient Oncology							
October	Blood and Marrow Transplant							
November	Ambulatory Oncology							
December	Research							ASHP Midyear
January	Elective							
February	Palliative Care							
March	Elective							
April	System Oncology							HOPA
May	Elective							Regional Residency Conference
June	Elective							

* Example rotation schedule (actual schedule may vary)

¹ Conference attendance and reimbursement may vary according to resident interest, prior experience, departmental needs, and available funds

- Required Clinical Rotations
- Required Longitudinal Rotations
- Elective Rotations

PGY2 Pain Management and Palliative Care Pharmacy Residency

OhioHealth’s PGY2 Pain Management and Palliative Care Pharmacy Residency was carefully designed to build a foundation of knowledge in hospice, pain management, and palliative care medicine through training with a comprehensive interdisciplinary team. As the resident progresses through the year, they will obtain the knowledge and skills necessary to become a successful, independent clinician. Appropriate activities are incorporated to ensure completion of the ASHP required goals and objectives and allow the resident to tailor the program based on individual needs assessment and interests.

OhioHealth’s PGY2 Pain Management and Palliative Care Pharmacy Residency program graduates are equipped to practice as independent clinicians. Core rotations focus on acute and chronic pain management, palliative care, hospice, addiction medicine, oncology, and medication safety/opioid stewardship. Additional longitudinal rotations develop leadership, teaching, and research skills throughout the year. Electives are customizable to fulfill the resident’s goals and career aspirations. The residency year will culminate with a Palliative Care Capstone rotation in which the resident will function as the primary pharmacist on the inpatient palliative care interdisciplinary team with a preceptor facilitating.

Month	Rotation	Longitudinal			Conferences
July	Orientation/Bootcamp	Home Hospice / Staffing (4 Hours /week)	Leadership	Research	
August	Foundations (8 weeks)				
September	Inpatient Hospice (6 weeks)				
October					
November	Medication Safety				
December	Elective				
January	Non-malignant Pain	Harm Reduction Clinic	Teaching		
February	Addiction Medicine				
March	Elective				
April	Oncology				
May	Outpatient Palliative				
June	Capstone				

* Example rotation schedule (actual schedule may vary)

- Required Clinical Rotations
- Required Longitudinal Rotations
- Required Off-Site Rotations
- Elective Rotations

PGY1/PGY2/MS Health-System Pharmacy Administration and Leadership Pharmacy Residency

The 24-month Health System Pharmacy Administration and Leadership (HSPAL) residency program at OhioHealth Grant Medical Center and OhioHealth Riverside Methodist Hospital is tailored to fulfill residents' individual interests and goals within ASHP accreditation standards. PGY1 Requirements must be accomplished in the first 15 months of residency. Residents will complete academic training at The Ohio State University College of Pharmacy in years one and two, while participating in both clinical and administrative rotations.

PGY1 YEAR

Month	Rotation	Longitudinal			
June	Orientation (6 weeks)	Ambulatory Care	Hospital Pharmacy	Leadership Professional Development	Research
July					
August	General Medicine (6 weeks)				
September	Clinical Elective (4 weeks)				
October	Medication Safety (4 weeks)				
November	Operations I (4 weeks)				
December	Project				
January	Human Resources I (8 weeks)				
February					
March	Clinical Elective (4 weeks)				
April	Medical ICU (4 weeks)				
May	Emergency Department (4 weeks)				
June	Medication Use (4 weeks)				

* Example rotation schedule (actual schedule may vary)

- Required PGY1 Longitudinal
- Required PGY1
- Other
- Required PGY2
- Elective

PGY1/PGY2/MS Health-System Pharmacy Administration and Leadership Pharmacy Residency

Didactic work at The Ohio State University affords opportunities for networking with the Ohio State alumni and Latiolais Leadership Program. Residents will gain exposure to a true health system environment as part of the OhioHealth care system, which is comprised of 15 hospitals, three joint-venture hospitals, one managed-affiliate hospital, 200+ ambulatory sites and other health services spanning a 50-county area. This exposure to health system management differentiates our residency program. HSPAL residents are active members of the leadership team and pursue activities that will collectively impact the practice of pharmacy. We believe this experience creates the greatest opportunity for residents to make a significant impact after their residency in the environment of health system pharmacy and accountable care organization.

PGY2 YEAR

Month	Rotation		Longitudinal				
	OPS TRACK Orientation II prior to rotation start	CLIN TRACK Orientation II prior to rotation start	Informatics	Human Resources II	Hospital Pharmacy Practice II	Topics in Health-System Leadership	Research II
July	Regulatory Compliance (4 weeks)						
August	Clinical Management (4 weeks)	Clinical Management (8 weeks)					
September	Operations II (8 weeks)						
October		Operations II (4 weeks)					
November	Elective (4 weeks)						
December	Project						
January	Finance and Business (8 weeks)						
February							
March	Campus/Operational Director (8 weeks)	Clinical Director (8 weeks)					
April							
May	Organization Strategy (4 weeks)						
June	Elective (4 weeks)						

* Example rotation schedule (actual schedule may vary)

- Required PGY2 Longitudinal
- Elective
- Required PGY2
- Other

2024-2025 Residency Class

OHIOHEALTH DOCTORS HOSPITAL: PGY1 PHARMACY



Morgan Ferrell,
PharmD



Lauren Rehm,
PharmD

OHIOHEALTH GRANT MEDICAL CENTER: PGY1 PHARMACY

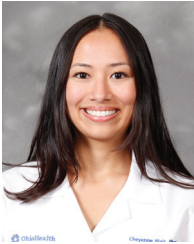


Mya Parsons,
PharmD



Maddisen Wycoff,
PharmD

OHIOHEALTH MANSFIELD HOSPITAL: PGY1 PHARMACY



Cheyenne Blair,
PharmD



Anthony Li,
PharmD



Alexis Mulvaine,
PharmD

OHIOHEALTH MARION GENERAL HOSPITAL: PGY1 PHARMACY



Hanna Reker,
PharmD

2024-2025 Residency Class

OHIOHEALTH RIVERSIDE METHODIST HOSPITAL: PGY1 PHARMACY



Deema Alhaj,
PharmD



Camryn Barton,
PharmD



Erica L. Carlson,
PharmD



Shannon Peck,
PharmD

OHIOHEALTH RIVERSIDE METHODIST HOSPITAL: PGY2 AMBULATORY CARE PHARMACY



Madison Pawlak,
PharmD

OHIOHEALTH RIVERSIDE METHODIST HOSPITAL: PGY2 CRITICAL CARE PHARMACY



Jordan Orchard,
PharmD

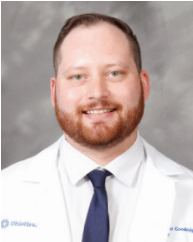
2024-2025 Residency Class

OHIOHEALTH GRANT MEDICAL CENTER: PGY2 EMERGENCY MEDICINE PHARMACY



Brooklyn Cassady,
PharmD

OHIOHEALTH RIVERSIDE METHODIST HOSPITAL: PGY2 ONCOLOGY PHARMACY



Alex Goodridge,
PharmD

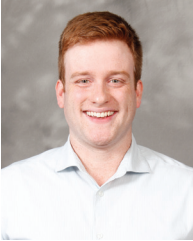
OHIOHEALTH RIVERSIDE METHODIST HOSPITAL: PGY2 PAIN MANAGEMENT AND PALLIATIVE CARE



Katie Zimmerman,
PharmD, MS

2024-2025 Residency Class

**PGY1/2 HEALTH-SYSTEM PHARMACY ADMINISTRATION AND LEADERSHIP
OHIOHEALTH GRANT MEDICAL CENTER**



PGY2 Gavin Craig,
PharmD

Residency Program Leadership

SYSTEM RESIDENCY LEADERSHIP SUPPORT

Residency Leadership Council Chair: Kellie Musch, PharmD, MS
Pharmacy Learning Coordinator: Jamie Summerlin, PharmD, MS

OhioHealth Doctors Hospital:

PGY1 PHARMACY RESIDENCY:

Residency Program Director: Brigitta Miller, PharmD
Residency Program Coordinator: Dawna Evans, PharmD

OhioHealth Grant Medical Center:

PGY1 PHARMACY RESIDENCY:

Residency Program Director: Kent Wilin, PharmD, BCCCP
Residency Program Coordinator: Daniel James, PharmD, BCPS

PGY1/2 HEALTH-SYSTEM PHARMACY ADMINISTRATION AND LEADERSHIP:

Residency Program Director: Charles McCluskey III, PharmD, MBA, BCPS
Residency Program Coordinator: Pat Helman, PharmD, MS

PGY2 EMERGENCY MEDICINE PHARMACY RESIDENCY:

Residency Program Director: Taylor Roberson, PharmD, BCPS, BCEMP
Residency Program Coordinator: Daniel Dybdahl, PharmD, BCEMP

OhioHealth Mansfield Hospital:

PGY1 PHARMACY RESIDENCY:

Residency Program Director: John Emanuel, MS, PharmD, BCPS, MBA
Residency Program Coordinator: Joshua Mathias, PharmD, BCCCP

OhioHealth Marion General Hospital:

PGY1 PHARMACY RESIDENCY:

Residency Program Director: Charles Christie, PharmD
Residency Program Coordinator: Tricia Sutter, MS, RPh

OhioHealth Riverside Methodist Hospital:

PGY1 PHARMACY RESIDENCY:

Residency Program Director: Keaton S Smetana, PharmD, MBA, FNCS, FCCM

Residency Program Coordinator: Abby Tyson, PharmD, BCPS

PGY1/2 HEALTH-SYSTEM PHARMACY ADMINISTRATION AND LEADERSHIP:

Residency Program Director: Charles McCluskey III, PharmD, MBA, BCPS

Residency Program Coordinator: John Vrontos, Jr., PharmD, MS

PGY2 AMBULATORY CARE PHARMACY RESIDENCY:

Residency Program Director: Tara Schreck, PharmD, BCACP

Residency Program Coordinator: Megan LaBreck, PharmD, BCPS, CACP

PGY2 CRITICAL CARE PHARMACY RESIDENCY:

Residency Program Director: Angela Harding, PharmD, BCCCP

Residency Program Coordinator: Ashley Schuler, PharmD, BCCCP

PGY2 ONCOLOGY PHARMACY RESIDENCY:

Residency Program Director: Mark Zangardi, PharmD, BCOP

Residency Program Coordinator: Kara Osborne, PharmD, BCOP

PGY2 PAIN MANAGEMENT AND PALLIATIVE CARE PHARMACY RESIDENCY:

Residency Program Director: Natalie Malone, PharmD

Residency Program Coordinator: Lynn Aung, PharmD

